



Puertas & Portones Automáticos, S.A. de C.V.
¡Nuestra pasión es la Solución!...

»RAMPA NIVELADORA DE ANDEN MECANICO MARCA KELLEY MOD. CM.

KELLEY

■ CM MECHANICAL DOCKLEVELER PIT DETAILS

■ STAR® CONDUIT RUN DETAILS *(Back Cover)*

CUSTOMER _____

ADDRESS _____

JOB _____

DOCKLEVELER: MECHANICAL Model Number _____ QUANTITY _____

DOCKLEVELER RATING PER ANSI MH14.1-1987:

30K 35K 40K 45K

LIP LENGTH: 16" 18" 20"

STAR RESTRAINTS: STAR 1 STAR 1 with TRUK ALERT STAR 4
 STAR 2

NOTE: All STAR restraints, except STAR 1, require 115V, 1Ø.

CERTIFIED FOR CONSTRUCTION

BY _____ DATE _____

COMPANY _____

CITY & STATE _____

5559 R5 AUGUST 2007



Death or serious injury could result from failure to follow Kelley specifications for pit dimensions and/or configurations, or conduit location; improper installation of dock leveler, anchoring devices or optional/accessory equipment; installation into improperly formulated, prepared or placed concrete or concrete which is otherwise inadequate or unsound.



portonesautomaticos@adsver.com.mx
portonesautomaticos@prodigy.net.mx

(229) 461-7028



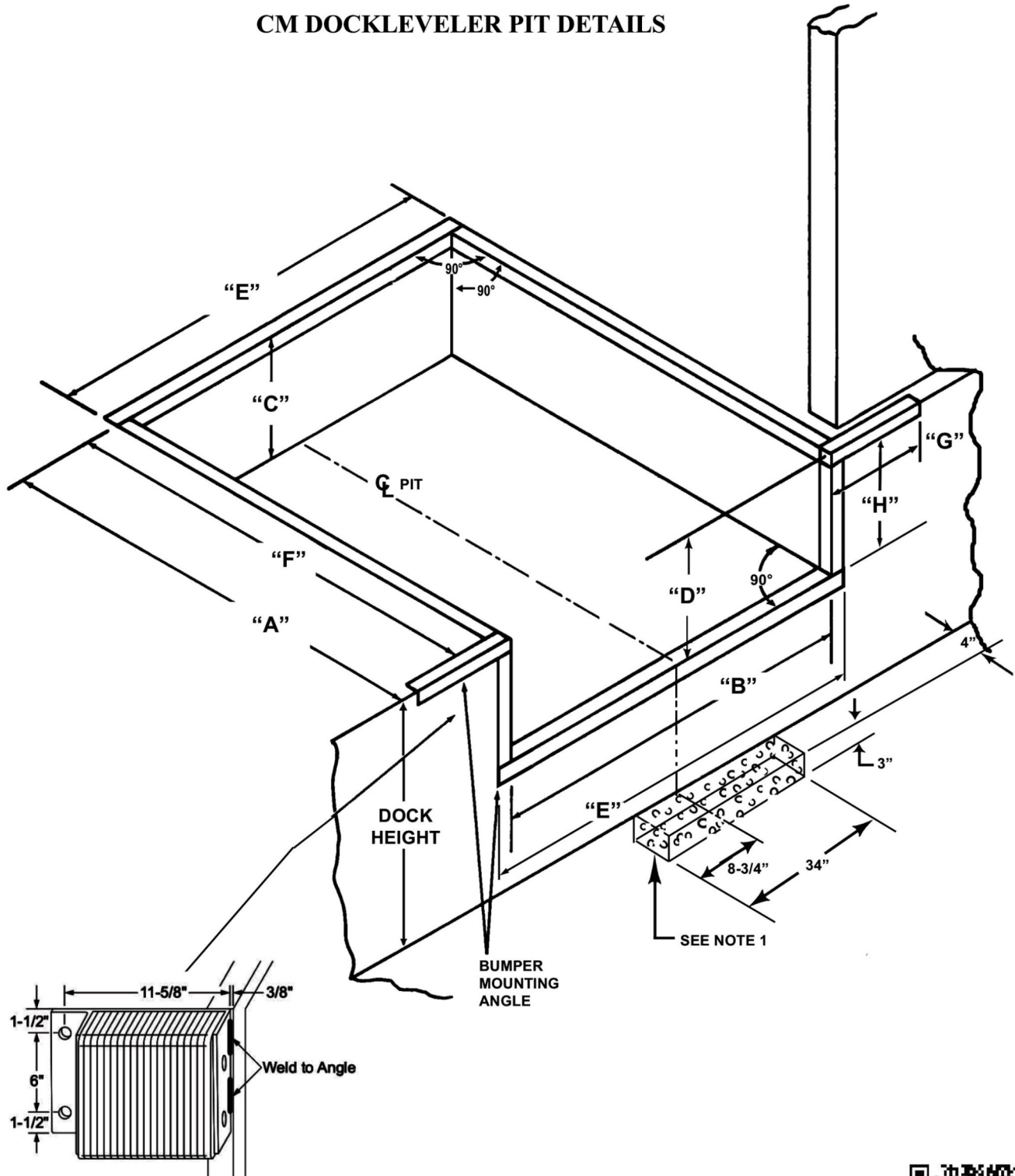
V10.21



Puertas & Portones Automáticos, S.A. de C.V.
¡Nuestra pasión es la Solución!...

»RAMPA NIVELADORA DE ANDEN MECANICO MARCA KELLEY MOD. CM.

CM DOCKLEVELER PIT DETAILS



**2 LAMINATED BUMPERS
FURNISHED BY
KELLEY.**

(229) 461-7028

portonesautomaticos@adsver.com.mx
portonesautomaticos@prodigy.net.mx



V10.21

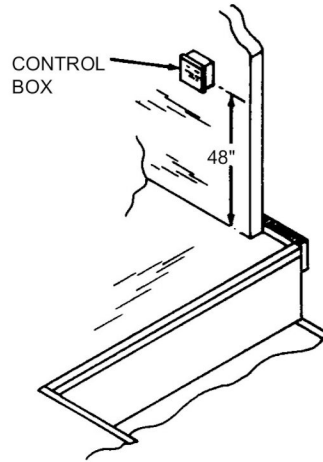




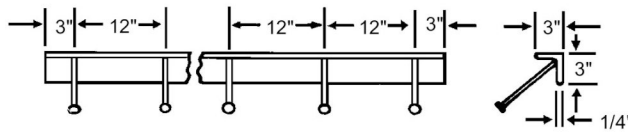
Puertas & Portones Automáticos, S.A. de C.V.
¡Nuestra pasión es la Solución!...

»RAMPA NIVELADORA DE ANDEN MECANICO MARCA KELLEY MOD. CM.

LOCATION FOR SINGLE CONTROL BOX FOR STAR



ANCHOR LAYOUT FOR CURB ANGLE



CONCRETE ANCHORS, 1/2" DIA., 6" LONG, LOCATED AS SHOWN

CM DOCKLEVELER PIT DIMENSIONS

NOM. DOCKLEVELER SIZE		6' x 6'	6' x 8'	6' x 10'	6.5' x 6'	6.5' x 8'	6.5' x 10'	7' x 6'	7' x 8'	7' x 10'
PIT LENGTH	DIM. "A"	63"	87"	111"	63"	87"	111"	63"	87"	111"
PIT WIDTH	DIM. "B"	73"	73"	73"	79"	79"	79"	85"	85"	85"
PIT DEPTH Rear	DIM. "C"	19-1/2"	19-1/2"	23-1/2"	19-1/2"	19-1/2"	23-1/2"	19-1/2"	19-1/2"	23-1/2"
PIT DEPTH Front	DIM. "D"	20"	20"	24"	20"	20"	24"	20"	20"	24"
CURB ANGLE Front & Rear	DIM. "E"	79"	79"	79"	85"	85"	85"	91"	91"	91"
CURB ANGLE Side	DIM. "F"	60"	84"	108"	60"	84"	108"	60"	84"	108"
CURB ANGLE Bumper	DIM. "G"	21"	21"	21"	21"	21"	21"	21"	21"	21"
CURB ANGLE Bumper	DIM. "H"	17"	17"	21"	17"	17"	21"	17"	17"	21"



V10.21

(229) 461-7028

portonesautomaticos@adsver.com.mx
 portonesautomaticos@prodigy.net.mx



(229) 927-5107, 167-8080, 167-8007, 151-7529.

www.adsver.com.mx

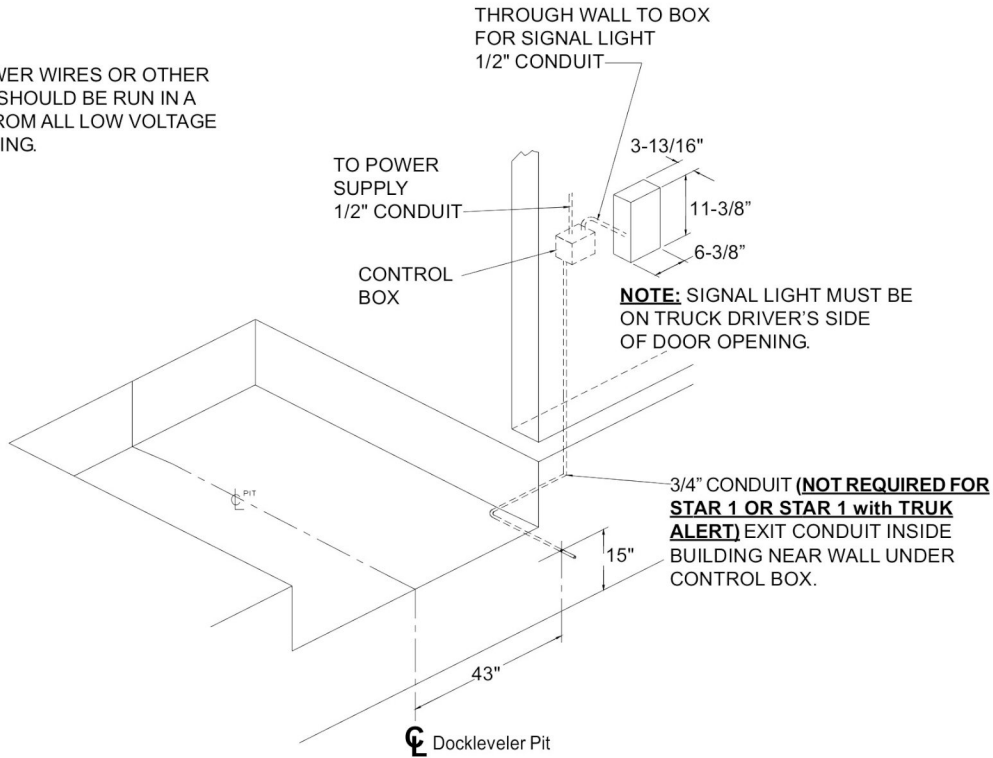


Puertas & Portones Automáticos, S.A. de C.V.
¡Nuestra pasión es la Solución!...

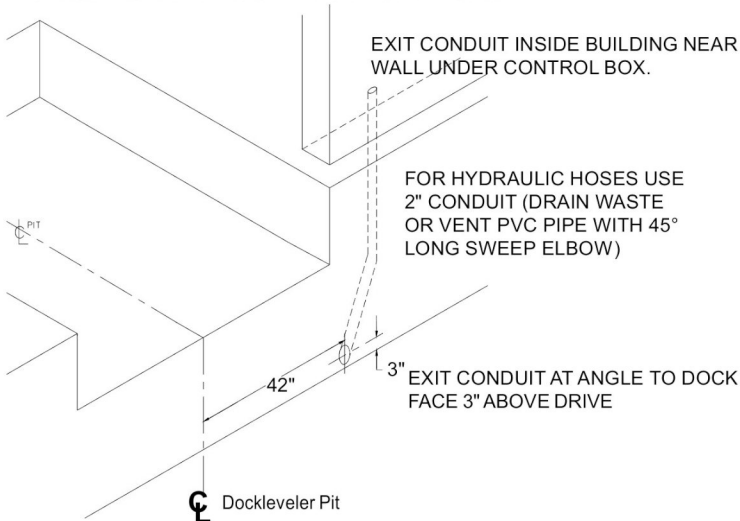
»RAMPA NIVELADORA DE ANDEN MECANICO MARCA KELLEY MOD. CM.

STAR CONDUIT RUN LOCATION DETAILS

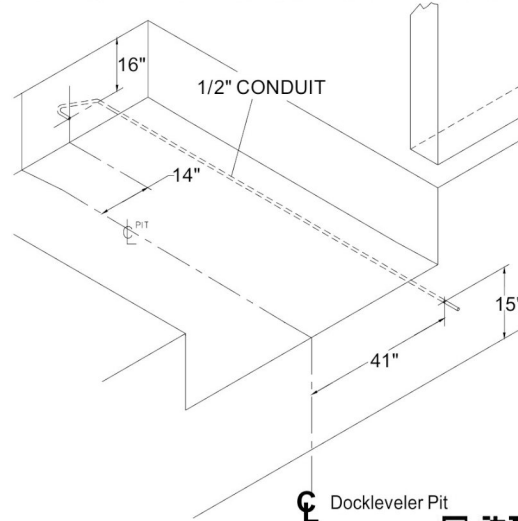
NOTE: ALL MOTOR POWER WIRES OR OTHER HIGH VOLTAGE WIRES SHOULD BE RUN IN A SEPARATE CONDUIT FROM ALL LOW VOLTAGE CONTROL CIRCUIT WIRING.



*ADDITIONAL CONDUIT REQUIREMENTS FOR OPTIONAL FLOOD PACKAGE — STAR 4



*ADDITIONAL CONDUIT REQUIREMENTS FOR OPTIONAL LIP LIMIT SWITCH — STAR 4



*Requires both the standard conduit run and the additional conduit for the option.

(229) 461-7028

portonesautomaticos@adsver.com.mx
portonesautomaticos@prodigy.net.mx



V10.21

(229) 927-5107, 167-8080, 167-8007, 151-7529.



www.adsver.com.mx